

Stackable

MATERIALS & FEATURES

- 1 bicycle secured - long-term parking solution (**Class 1**)
- ASTM A36 High Security Steel Walls
- ASTM A53 Steel Pipe Handle
- Dual Locking Point Doors
- Stackable For Increased Parking Density
- Optional Stainless Trident Security Nut (**Upgrade**)

FINISH OPTIONS

- DuraPlas® Black Thermoplastic

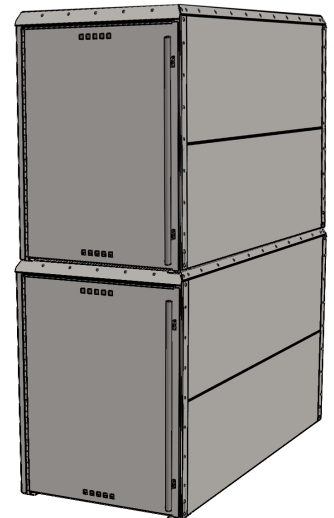
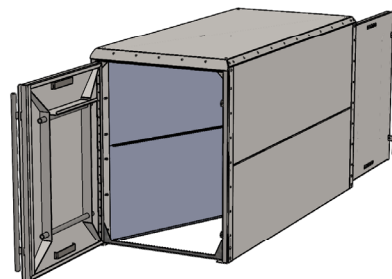
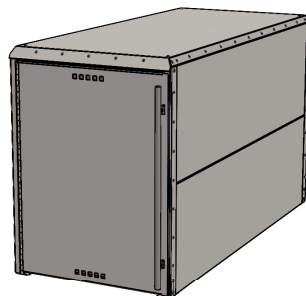
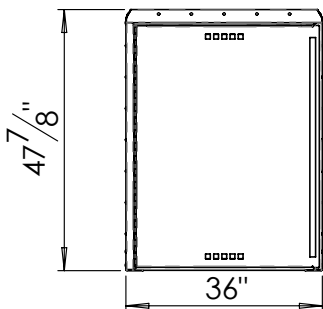
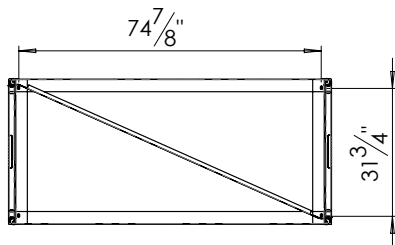
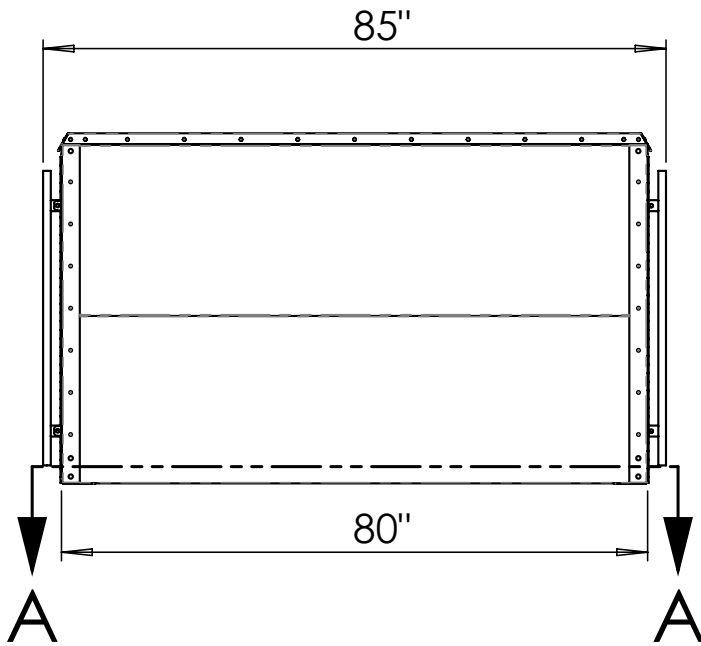
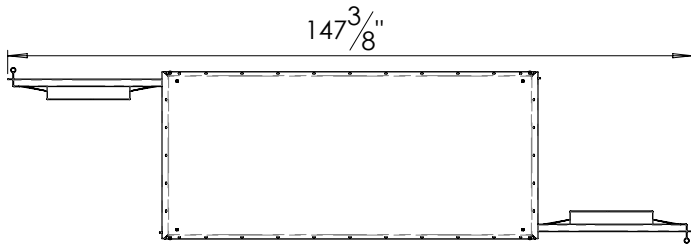
MOUNTING OPTIONS

- Surface mount - Concrete (**Anchors Sold Separately**)
- Surface mount - Asphalt/Pavers (**Anchors Sold Separately**)

SPACE USE RECOMMENDATIONS

- Front of locker to wall setback (door swing clearance)
 - Minimum: 48"
 - Recommended: 60"
- Parallel to a wall
 - Less than 3" or more than 9"*
- Distance between lockers
 - Less than 3" or more than 9"*

**Child safety requirements



Stackable

MATERIALS & FEATURES

- 2 bicycle secured - long-term parking solution (**Class 1**)
- ASTM A36 High Security Steel Walls
- ASTM A53 Steel Pipe Handle
- Dual Locking Point Doors
- Stackable For Increased Parking Density
- Optional Stainless Trident Security Nut (**Upgrade**)

FINISH OPTIONS

- UV Resistant Metallic Grey Powder Coat

MOUNTING OPTIONS

- Surface mount - Concrete (**Anchors Sold Separately**)
- Surface mount - Asphalt/Pavers (**Anchors Sold Separately**)

SPACE USE RECOMMENDATIONS

- Front of locker to wall setback (door swing clearance)
 - Minimum: 48"
 - Recommended: 60"
- Parallel to a wall
 - Less than 3" or more than 9"
- Distance between lockers
 - Less than 3" or more than 9"

**Child safety requirements