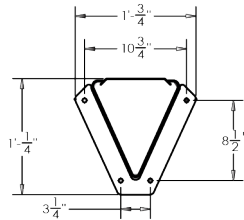
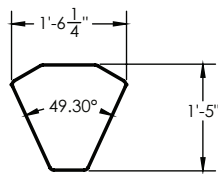
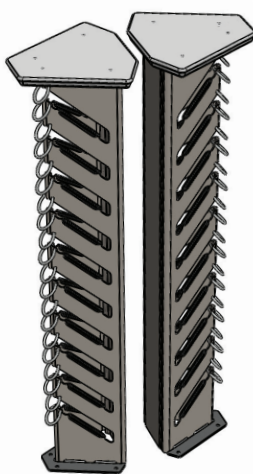


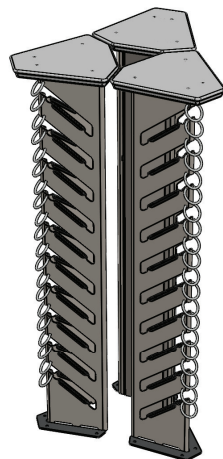
**SINGLE**



**ADDITIONAL CONFIGURATIONS**



**DOUBLE**



**TRIPLE**

**MATERIALS & FEATURES**

- 10 boards/scooters secured
- ASTM A36 steel for all structural plate (**standard**)
- Black injection molded urethane EdgeGuards™
- Composite PE top shelf
- Lockable steel rings

**FINISH OPTIONS**

DuraPlas® Silver - Standard (**Marine Environment Rated**)

**MOUNTING OPTIONS**

Surface Mount - Concrete (**anchors sold separately**)

Note: Each surface mounted SkateDock® can be turned into a double or triple sided rack when mounted with additional docks.

**SPACE USE RECOMMENDATIONS**

- Back of dock wall setback  
Minimum 4"
- Docks running parallel  
Minimum 36" center to center  
Recommended 48" center to center
- Street Setbacks  
Minimum 30" from curb  
Recommended 48" from curb