

GROUND CONTROL SYSTEMS®
SkateDock®
Installation Instructions:
Surface Mount

TOOLS NEEDED FOR INSTALLATION:

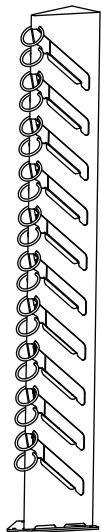
1. Gloves and Safety Glasses
2. 3/16" Allen Wrench
3. 3/8" Hammer Drill and Drill Motor
4. 9/16" & 3/4" Deep Well Socket and wrench
5. Small vacuum or brush
6. level

NOTE: These instructions are for installation of the surface mounted SkateDock® in CONCRETE ONLY.

Included per unit:

1. SkateDock® Tower
2. Box with Tower Lid and hardware

* Not included - sold separately:
 Anchor Kit - (4) 3/8" anchor, nut, washer



SkateDock®

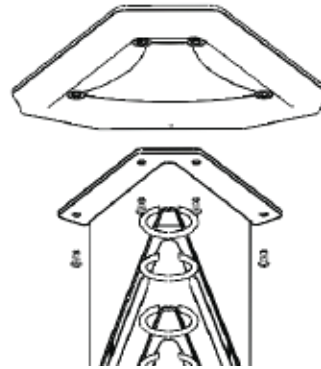


Tower Lid

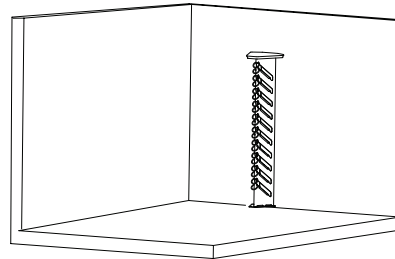


Anchor Kit
 (sold separately)

1. Remove the Tower Lid from the box along with the hardware. Place the Lid on the Tower, and insert the four screws into the underside holes of the Lid. Use the Allen wrench to screw them in tightly until the top shelf sits securely on the Tower.



2. Place the dock on the surface where it is to be mounted, checking for set backs to walls, curbs, doorways, pedestrian walkways and wheel chair accessible areas.

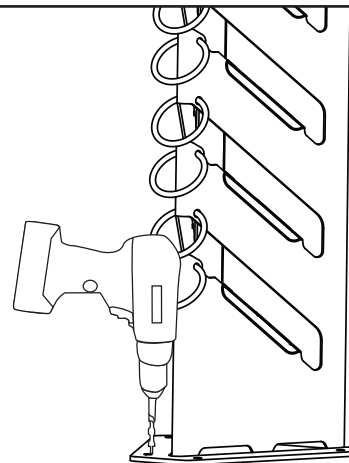


Setbacks:

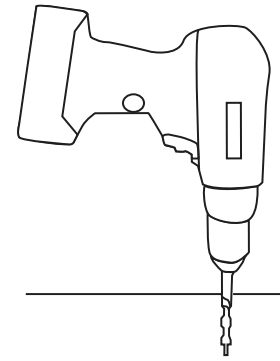
Distance between racks - center to center:
 36" minimum, 48" recommended

NOTE: Distance from the backside bottom of the rack to the wall must be a minimum of 4" to account for the Tower

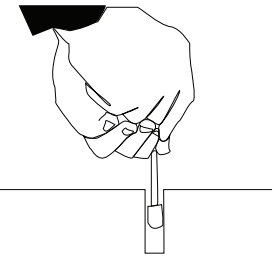
3. Use a 3/8" Hammer Drill to make pilot holes - place the tip of the drill bit in the SkateDock® flange holes and drill for approximately 2-3 seconds making sure to keep the drill straight up and down to avoid angled drilling.



4. Once all 4 pilot holes are drilled, it is recommended to temporarily mark the footprint of the SkateDock® in case you need to re-drill further. You can now move the dock out of the way to drill to the depth needed to insert your anchor.



5. Clean out and around the holes with a small blast of air and vacuum or small brush.



6. If using the WAK4 (four 3/8" anchors, four washers and four nuts), remove the washers and nuts from all four anchors.



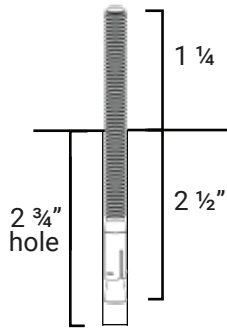
GROUND CONTROL
 SYSTEMS®

Innovative Bike & Board Parking

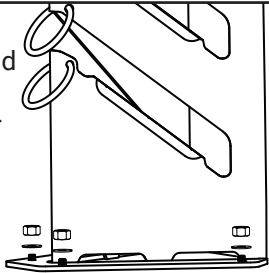
www.groundcontrolsystems.com
 info@groundcontrolsystems.com

800-630-7225

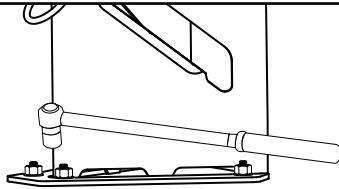
7. Install a 3/8" anchor into each hole about 2 1/2" into the concrete, leaving 1 1/4" above ground.



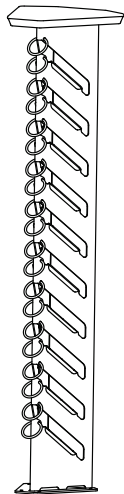
8. Place dock over the 3/8" anchors and install the washers and nuts for all four anchors. Level the dock and shim if necessary.



9. Tighten the nuts using the 9/16" Deep Well Socket to 25 ft_Lbs of



10. Bump and move the dock to help settle it onto the surface it is mounted on. Re-check for level and re-shim if necessary.



Re-tighten the anchor nuts to approximately 25 ft_Lbs.

NOTE: Once the SkateDock® is installed, we recommend peening over the top of the wedge anchor threads to help deter possible theft of the unit. High security anchors are available. Please contact Ground Control for more information.



For more information on how to properly secure a skateboard, longboard or scooter in a SkateDock®, scan the QR code or go to youtu.be/Aq03Fqu-syE and watch a quick informational video.

For questions or concerns regarding the assembly and installation of the SkateDock®, please call Ground Control at 800-630-7225 or email us at info@groundcontrolsystems.com.

These installation instructions are intended for the install of the surface mounted SkateDock® in concrete only. For information on installing in other base materials or instruction on how to install our wall mounted docks, please contact Ground Control.

The information contained in this document is the sole property of Ground Control Systems®, any reproduction in part or whole without the written permission of Ground Control Systems®, is prohibited.

GROUND CONTROL
SYSTEMS®
Innovative Bike & Board Parking

www.groundcontrolsystems.com
info@groundcontrolsystems.com
800-630-7225